



Elements of Design

Interior Design I

By: Daban Abdullah Salam

2023-2024

2nd Lecture

Content :

- Line
- Space
- shape
- Form
- Color
- Texture
- Lighting
- Furniture

1. Line

- Line in interior design is an example of less obvious elements leaving the maximum impact on overall aesthetics through their functionality. These are details that can give a design varied looks when made the focal point. As a result, a space appears longer, narrower or larger.



Types of Line:

- Horizontal line: these line are calm, peace and quite



how stability, power, formality
height



- *Diagonal Line: sense of Dynamic and movement*



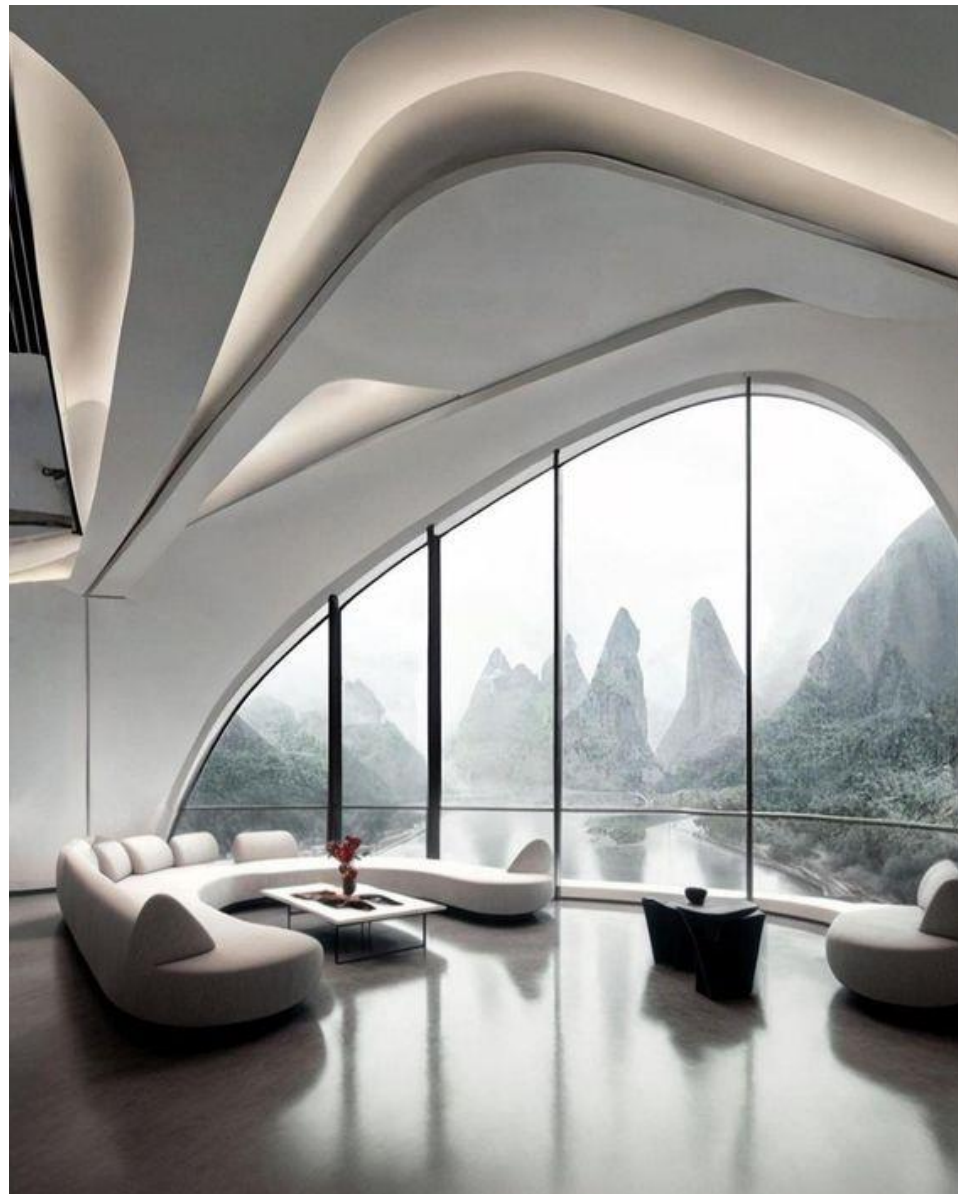
- Diagonal lines can really bring life to a space, direct the eye upwards or downwards, and add volume to a space, making it feel larger than it is.







- Curved line:
- *Curved lines give a human quality to interiors; they can be easy on the eyes and pleasing to view*



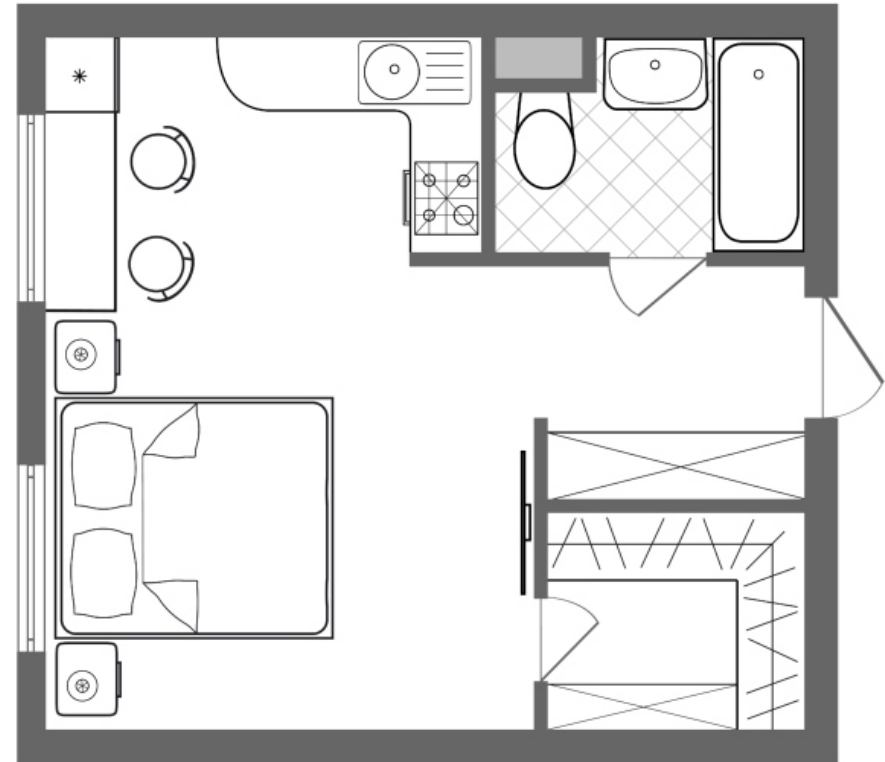
2. Space :

- Knowing the overall size and where doors and windows are located is essential to a seamless design. Space that is filled with furniture is known as positive space, while empty space is known as negative. Striking a balance between positive and negative space makes it feel inviting.



- *What is the role of space in interior design?*

- Ideal space planning can bring in a sense of balance between beauty and comfort. Be it the space of your kitchen or bedroom, every area counts. A space must have a good sense of balance. This comes when you are able to integrate everything well



3. Shape:

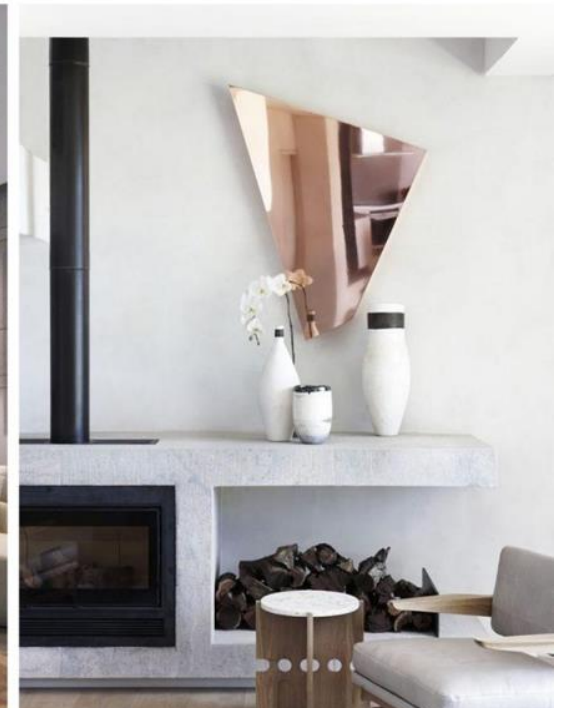
- One of the most significant elements of interior design is the use of shape. The psychology of shapes in interior design plays a crucial role in how we perceive and interact with spaces. The use of abstract shapes in interior design can add a sense of movement, depth, and interest to a space.





4. Form:

- Form refers to shapes of the room in general. It could be the shape of the entire space, the furniture, décor and even the light fittings. There are two types;
 1. geometric
 2. natural.





5. Color:

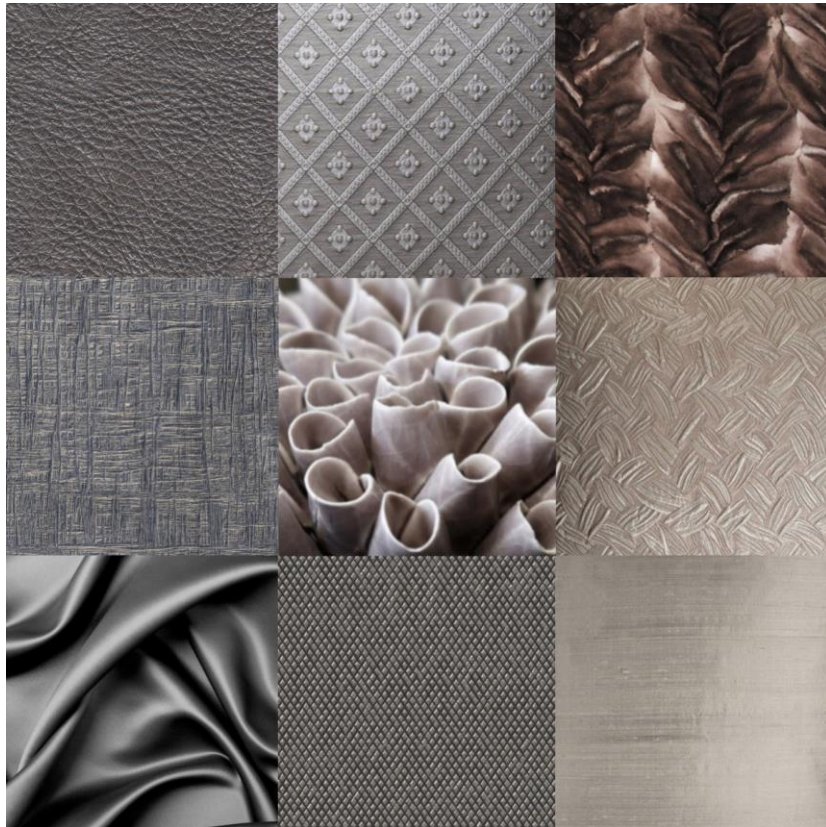
- Colour is one of the most fundamental and influential aspects of interior design. Colour selection is a major factor in determining the success or failure of a decorative scheme. The carefully considered use of colour can unify furnishings and finishes to produce a cohesive and pleasing result.





6. TEXTURE:

- How are textures used in interior design?
- Incorporating textures into your interior design is a powerful way to add depth and visual interest to your space. By carefully selecting and combining different textures, you can create a multi-dimensional environment that engages the senses and creates a visually captivating experience.



There are two types of textures:

1. Visual
2. Tactile



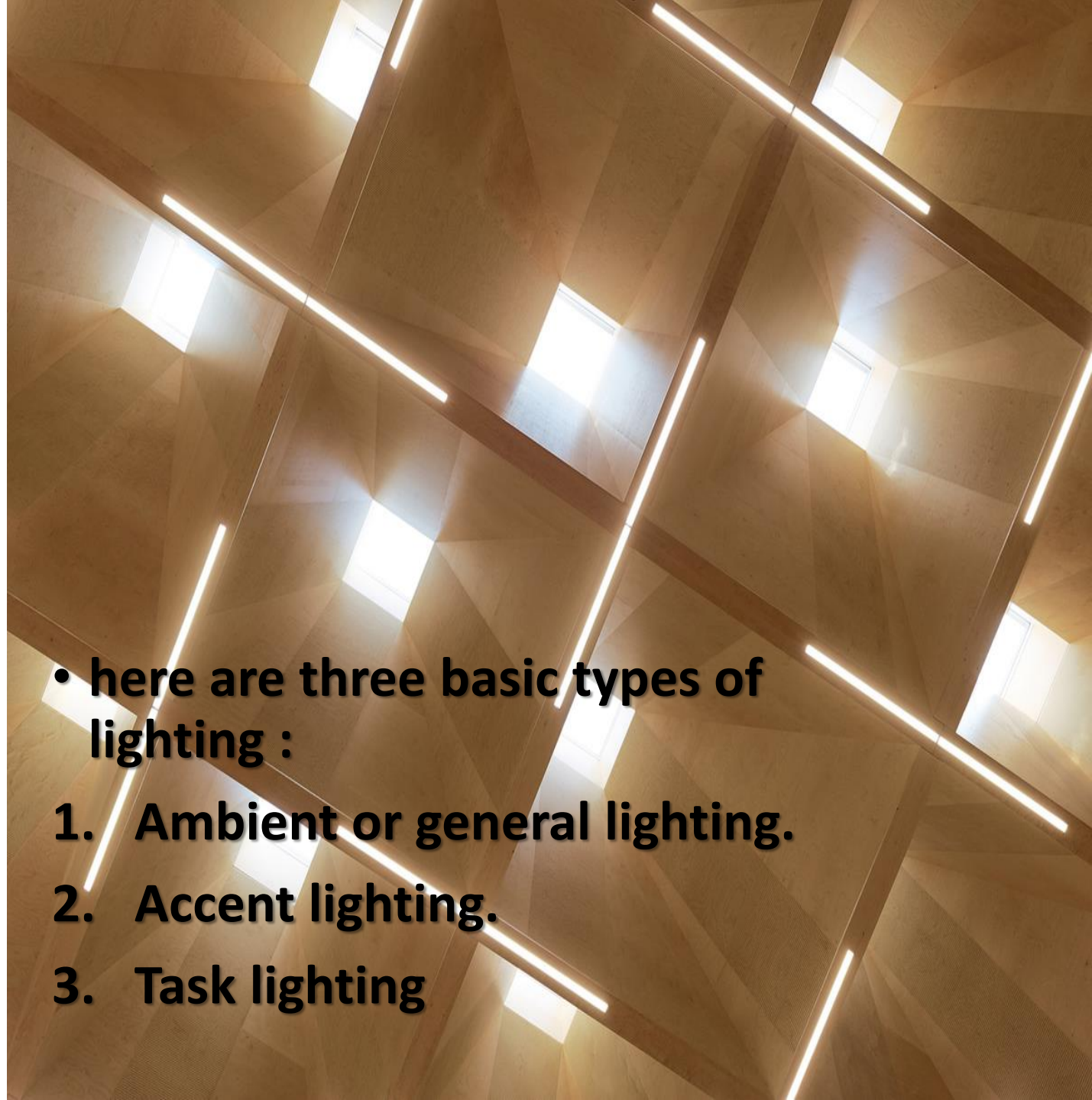




7. Lighting

- Lighting in interior design refers to the deliberate use of light to enhance the aesthetic and purpose of a specific space. Interior designers monitor the selection, placement, and control of mixed light sources to create a desired ambience, highlight certain features, and provide functional illumination for tasks

- **here are three basic types of lighting :**
 - 1. Ambient or general lighting.**
 - 2. Accent lighting.**
 - 3. Task lighting**



1. Ambient Lighting

- It is the most common kind of lighting. It illuminates the entire space softly without any harsh glare. It is more like natural and flat light that makes you see everything inside the room clearly without any focus on a particular object

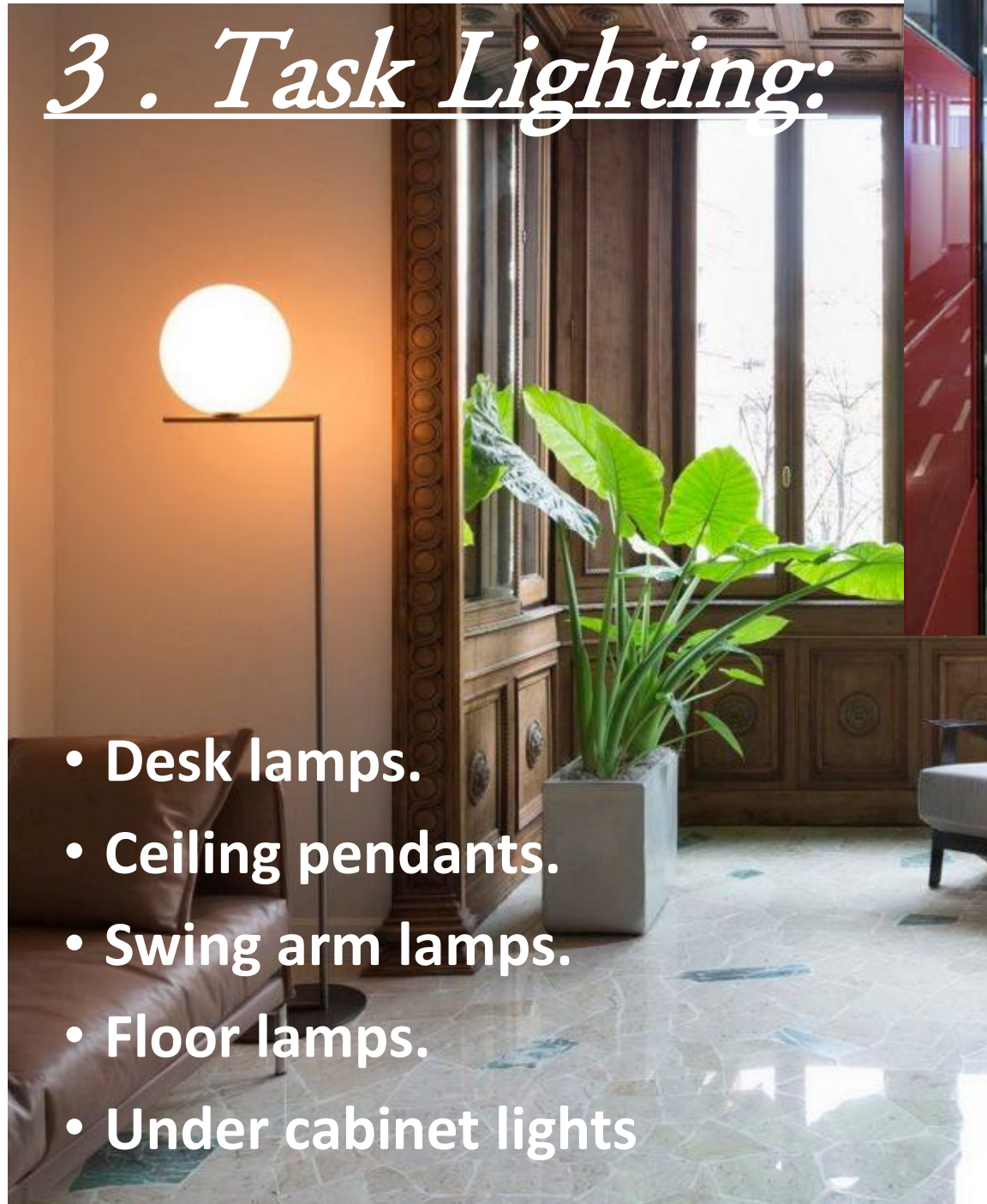


2 . Accent lighting

- Accent lighting is a type of interior lighting that is used to highlight specific features or details in a room. It can be used to accentuate architectural features, such as paintings, sculptures, or other decorative elements. Accent lighting can also be used to create a certain mood or ambiance in a space.



3. Task Lighting:



- Desk lamps.
- Ceiling pendants.
- Swing arm lamps.
- Floor lamps.
- Under cabinet lights

8. Furniture:

- Furniture is a functional element of design, as well as an important one to use to bring together a room and the feeling of a house. Furniture forces particular paths to be taken throughout the space and are a great way to express creativity or personality.

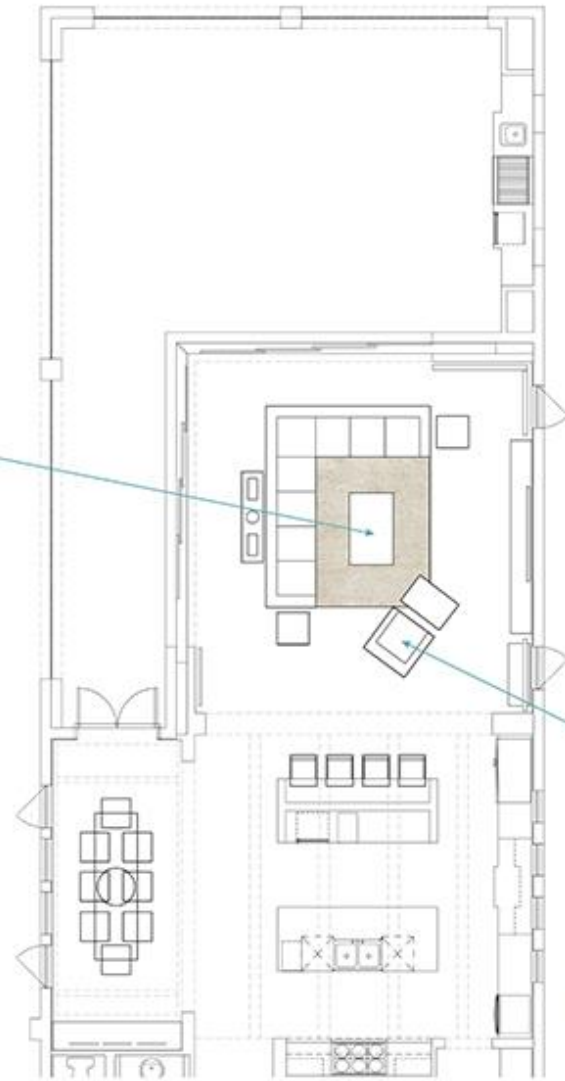




Drape Fabric



KATHY KUO
HOME



Custom Pillow Fabric

THANK YOU

