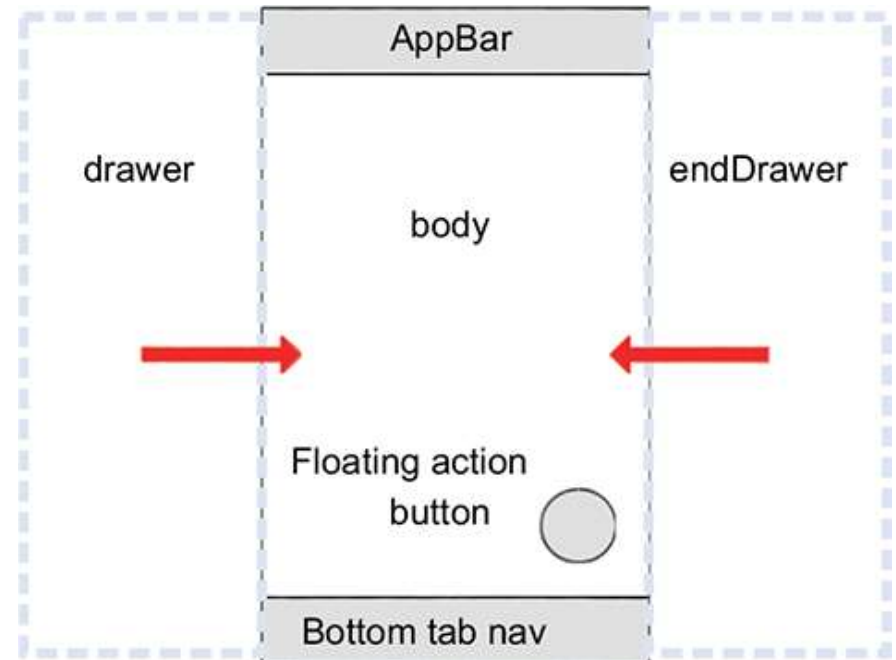


Scaffold

Scaffold

The Scaffold is a widget in Flutter used to implements the basic material **design visual layout structure**. It is quick enough to create a general-purpose mobile application and contains almost everything we need to create a functional and responsive Flutter apps.



```
import 'package:flutter/material.dart';  
void main(){  
  runApp(MyApp());  
}  
class MyApp extends StatelessWidget { const  
  MyApp({Key? key}) : super(key: key); @override  
  Widget build(BuildContext context) { return  
    MaterialApp(  
home: Scaffold(  
  appBar: AppBar(  
    title: Text('hello scaffold'),  
  ),  
  body: Center(  
    child: Text(' body text'),  
  ),  
),  
);  
}}
```



Scaffold constructor and properties

```
const Scaffold({ Key key,  
this.appBar,  
this.body,  
this.floatingActionButton,  
this.floatingActionButtonLocation,  
this.persistentFooterButtons,  
this.drawer,  
this.endDrawer,  
this.bottomNavigationBar,  
this.bottomSheet,  
this.floatingActionButtonAnimator,  
this.backgroundColor,  
this.resizeToAvoidBottomPadding = true,  
this.primary = true,  
})
```

1. appBar:

- It is a **horizontal bar** that is mainly displayed at the **top** of the Scaffold widget. It is the main part of the Scaffold widget and displays at the top of the screen. Without this property, the Scaffold widget is incomplete. It uses the appBar widget that itself contains various properties.

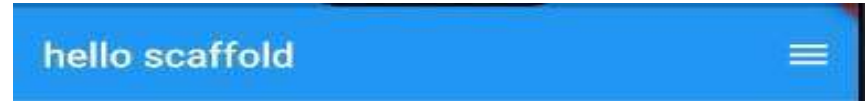
```
Scaffold(  
  appBar: AppBar(  
    title: Text('First Flutter Application'),  
  ), )
```

2. body:

It is the other primary and required property of this widget, which will **display the main content in the Scaffold.**

```
Scaffold(  
  appBar: AppBar(  
    title: Text('First Flutter Application '),  
  ),  
  body: Center(  
    child: Text("Information Technology",  
      style: TextStyle(  
        color: Colors.black,  
        fontSize: 30.0,  
      ),  
    ),  
  ),  
),
```

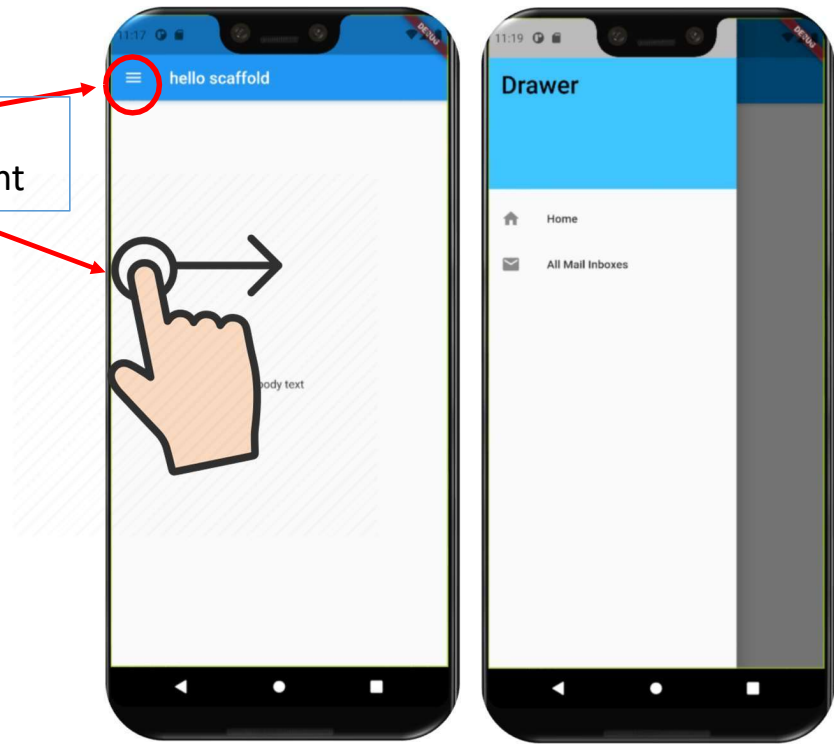
3. drawer: or endDrawer



It is a **slider panel** that is displayed at the side of the body. Usually, it is hidden on the mobile devices, but the user can swipe it left to right or right to left to access the drawer menu.

```
drawer: Drawer( child: ListView( children: [  
DrawerHeader(  
  decoration: BoxDecoration( color: Colors.blue, ),  
  child: Text( 'Drawer',  
    style: TextStyle( color: Colors.black, fontSize: 30,  
  ), ), ),  
ListTile(  
  title: Text('Home'), leading: Icon(Icons.home),  
),  
ListTile(  
  title: Text(" Mail Inboxes"), leading: Icon(Icons.mail),  
), ), ], ), ),
```

Click this menu or
swipe it left to right

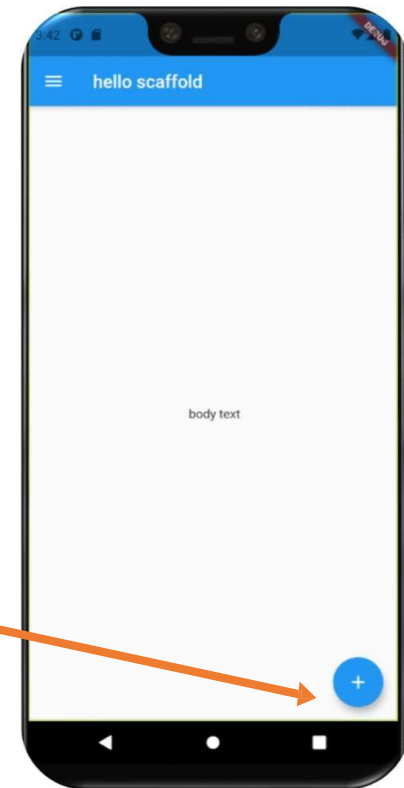


4. floatingActionButton:

It is a button displayed at the bottom right corner and floating above the body.

```
Scaffold(  
  appBar: AppBar(title: Text('hello scaffold')),  
  body: Center(  
    child: Text(" Body Text"),  
  floatingActionButton: FloatingActionButton( child:  
  Icon(Icons.add),  
    onPressed: (){  
      print('I am Floating Action Button');  
    }  
  );
```

```
floatingActionButton: FloatingActionButton.large //small
```




```
MaterialApp(  
  debugShowCheckedModeBanner: false,  
  theme: ThemeData(  
    primarySwatch: Colors.blue,  
  ),  
  home: Scaffold(  
    appBar: AppBar(  
      title: Text("hello Scaffold"),  
    ),  
    body: Center(child: Text("body area")),  
    floatingActionButton: FloatingActionButton.extended(  
      onPressed: () {},  
      label: const Text('Like'),  
      icon: const Icon(Icons.thumb_up, color: Colors.blue),  
      backgroundColor: Color.fromARGB(255, 242, 220, 20),  
    ),  
  ),  
);
```



5. **background Color:** This property is used to set the background color of the whole Scaffold widget.

```
backgroundColor: Colors.yellow,
```

6. **primary:** It is used to tell whether the Scaffold will be displayed at the top of the screen or not. Its default value is **true** that means the height of the appBar extended by the height of the screen's status bar.

```
primary: true/false,
```

hello Scaffold

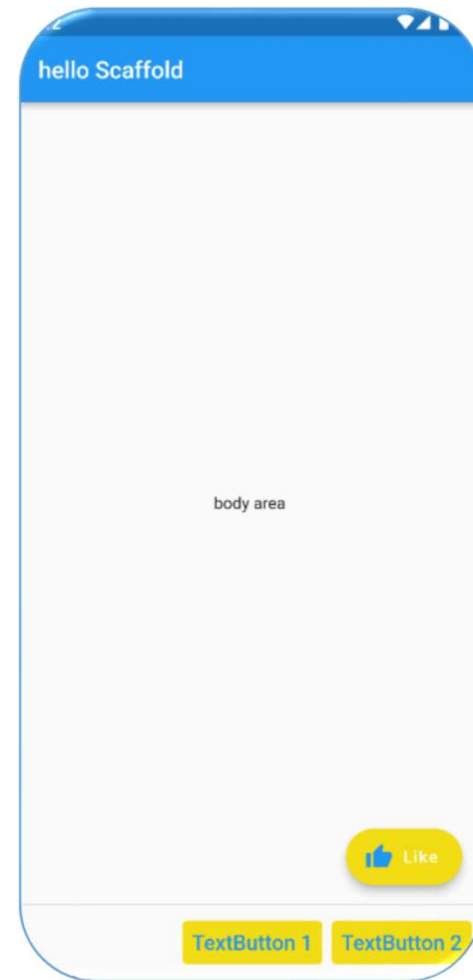
True

hello Scaffold

False

7. persistentFooterButton: It is a list of buttons that are displayed at the bottom of the Scaffold widget.

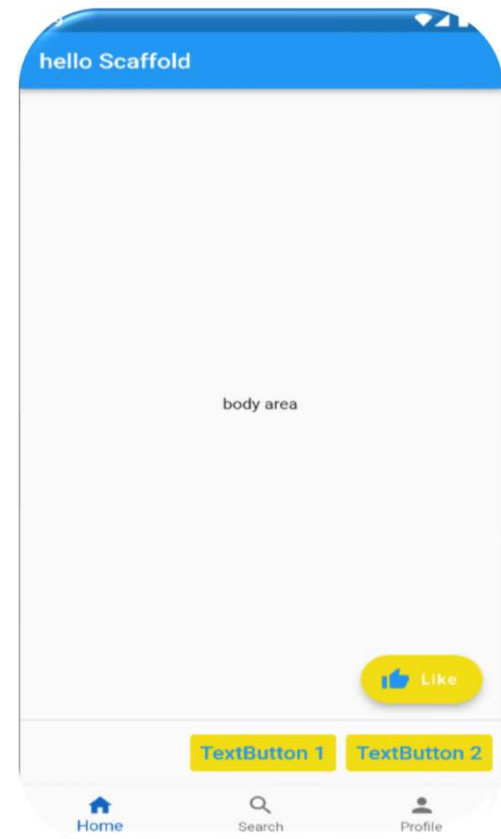
```
persistentFooterButtons: <Widget>[  
  TextButton(  
    onPressed: () {},  
    style: TextButton.styleFrom(  
      backgroundColor: Color.fromARGB(255, 242, 220, 20),  
    ),  
    child: const Text(  
      'TextButton 1',  
      style: TextStyle(fontSize: 18),  
    ), ),  
  TextButton(  
    onPressed: () {},  
    style: TextButton.styleFrom(  
      backgroundColor: Color.fromARGB(255, 242, 220, 20),  
    ),  
    child: const Text(  
      'TextButton 2',  
      style: TextStyle(fontSize: 18),  
    ), ),  
],
```



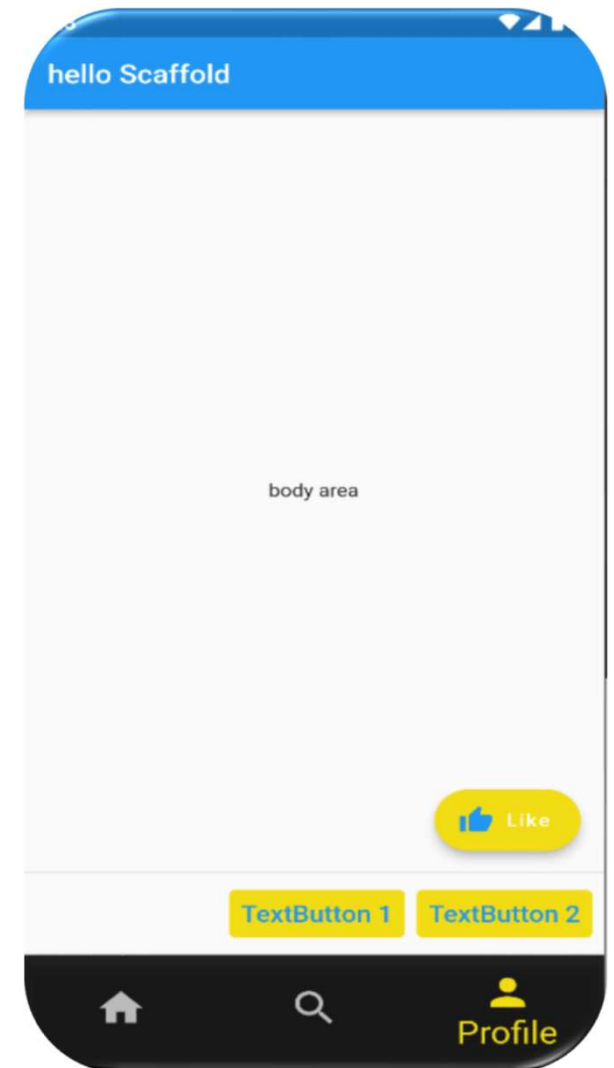
8. bottomNavigationBar:

This property is like a **menu that displays a navigation bar** at the bottom of the Scaffold. It can be seen in most of the mobile applications. This property allows the developer to add multiple icons or texts in the bar as items.

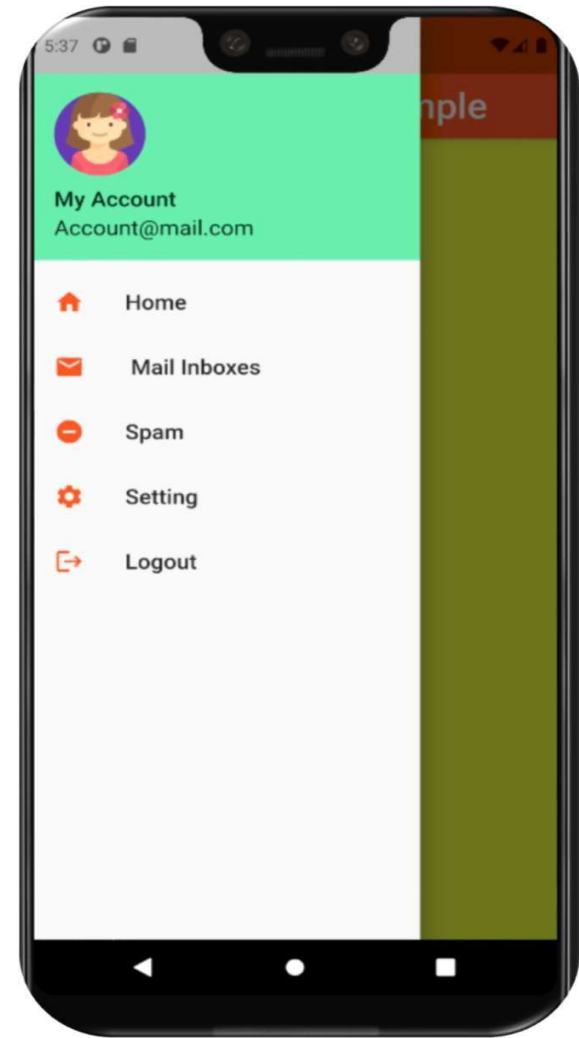
```
bottomNavigationBar: BottomNavigationBar(  
  fixedColor: Colors.blue[800],  
  items: [  
    BottomNavigationBarItem(  
      label: "Home",  
      icon: Icon(Icons.home), ),  
  
    BottomNavigationBarItem(  
      label: "Search",  
      icon: Icon(Icons.search) ),  
  
    BottomNavigationBarItem(  
      label: "Profile",  
      icon: Icon(Icons.person),  
    ), ], ),
```



```
bottomNavigationBar: BottomNavigationBar(  
  backgroundColor: Colors.black87,  
  selectedItemColor: Color.fromARGB(255, 242, 220, 20),  
  unselectedItemColor: Colors.white70,  
  //while using type shifting background colors NOT working  
  //type: BottomNavigationBarType.shifting,//fixed  
  currentIndex: 2,  
  iconSize: 35,  
  selectedFontSize: 24,  
  unselectedFontSize: 12,  
  showSelectedLabels: true,  
  showUnselectedLabels: false,  
  items: [  
    BottomNavigationBarItem(  
      label: "Home",  
      icon: Icon(Icons.home),  
    ),  
    BottomNavigationBarItem(label: "Search", icon: Icon(Icons.search)),  
    BottomNavigationBarItem(  
      label: "Profile",  
      icon: Icon(Icons.person),  
    ),  
  ], ),
```



Example



```
import 'package:flutter/material.dart';
void main(){
  runApp(MyApp());
}

class MyApp extends StatelessWidget {
  @override
  Widget build(BuildContext context) {
    return MaterialApp(
      theme: new ThemeData(
        primaryColor: Colors.greenAccent ),
      debugShowCheckedModeBanner: false,

      home: Scaffold(
        backgroundColor: Colors.limeAccent,
```

1

```
//use drawer or endDrawer
drawer: Drawer(
  child: ListView(
    children: [
      UserAccountsDrawerHeader(
        accountName: Text('My Account',
          style: TextStyle(
            fontSize: 18,
          )),
        accountEmail: Text('Account@mail.com',
          style: TextStyle(
            fontSize: 18,
          )),

        currentAccountPicture: CircleAvatar(
          backgroundColor: Colors.deepPurple,
          backgroundImage: AssetImage("assets/pic2.png"),
        ),
      ),
    ],
  ),
```

2

3

```
ListTile(  
  title: Text('Home',  
    style: TextStyle( fontSize: 18,  
    )),  
  leading: Icon(Icons.home,  
    color: Colors.deepOrange,  
  ),  
),  
ListTile(  
  title: Text(" Mail Inboxes",  
    style: TextStyle( fontSize: 18, )),  
  leading: Icon(Icons.mail,  
    color: Colors.deepOrange,)),  
),  
ListTile(  
  title: Text('Spam',  
    style: TextStyle( fontSize: 18, )),  
  leading: Icon(Icons.remove_circle,  
    color: Colors.deepOrange,)),  
),
```

4

```
ListTile(  
  title: Text('Setting',  
    style: TextStyle(  
    fontSize: 18,  
    )),  
  leading: Icon(Icons.settings,  
    color: Colors.deepOrange,)),  
),  
ListTile(  
  title: Text('Logout',  
    style: TextStyle(  
    fontSize: 18,  
    )),  
  leading: Icon(Icons.logout,  
    color: Colors.deepOrange,)),  
),  
],  
),  
),
```

5

```
appBar: AppBar(  
  backgroundColor: Colors.deepOrange,  
  title: Text('First Drawer Example',  
    style: TextStyle(  
    fontSize: 30,  
    color: Colors.white  
  )),  
),  
),  
body: Center(  
  child: Text(' Profile',  
    style: TextStyle(  
    fontSize: 30,  
    )),  
),  
),  
);  
}}
```